

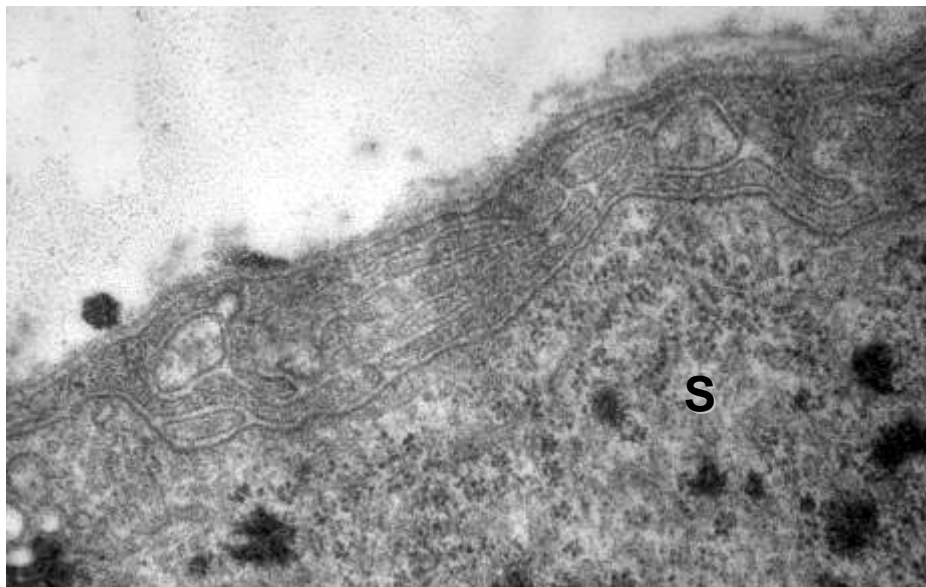
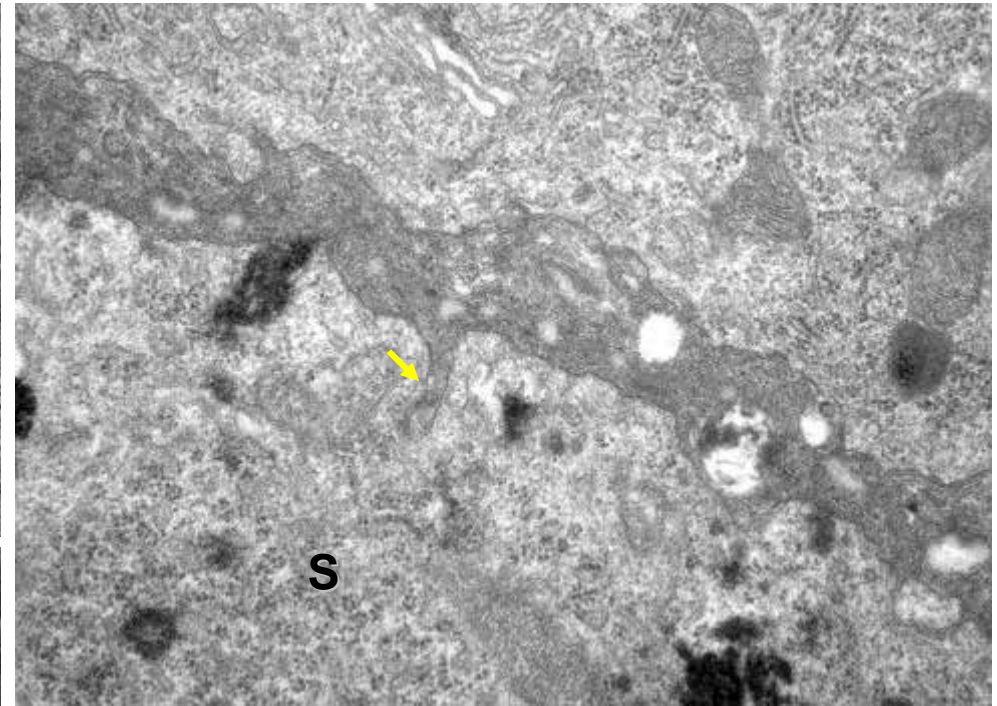
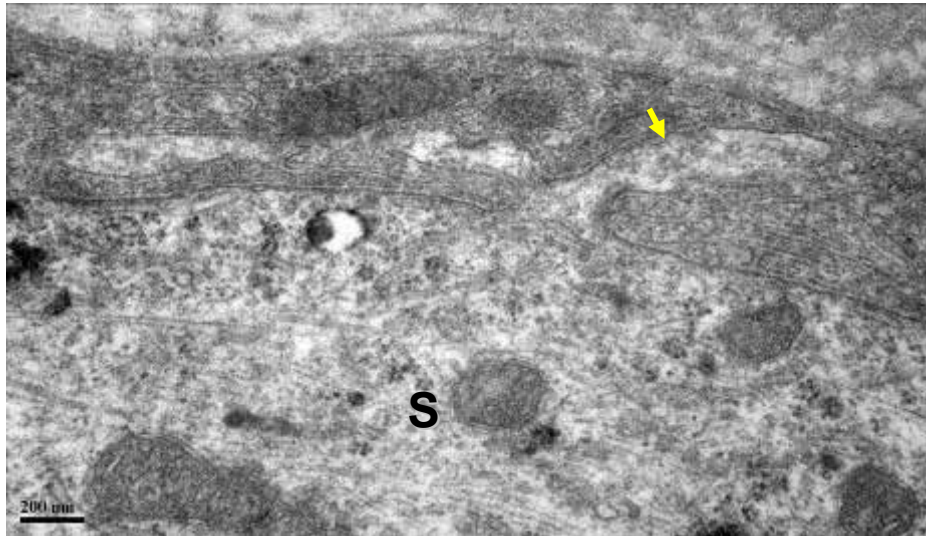
Naïve TG and satellite glial cells (SGCs):

1. nucleus (N) satellite glial cells cytosol
2. rER, mitochondria nucleus



Naïve TG and satellite glial cells (SGCs):

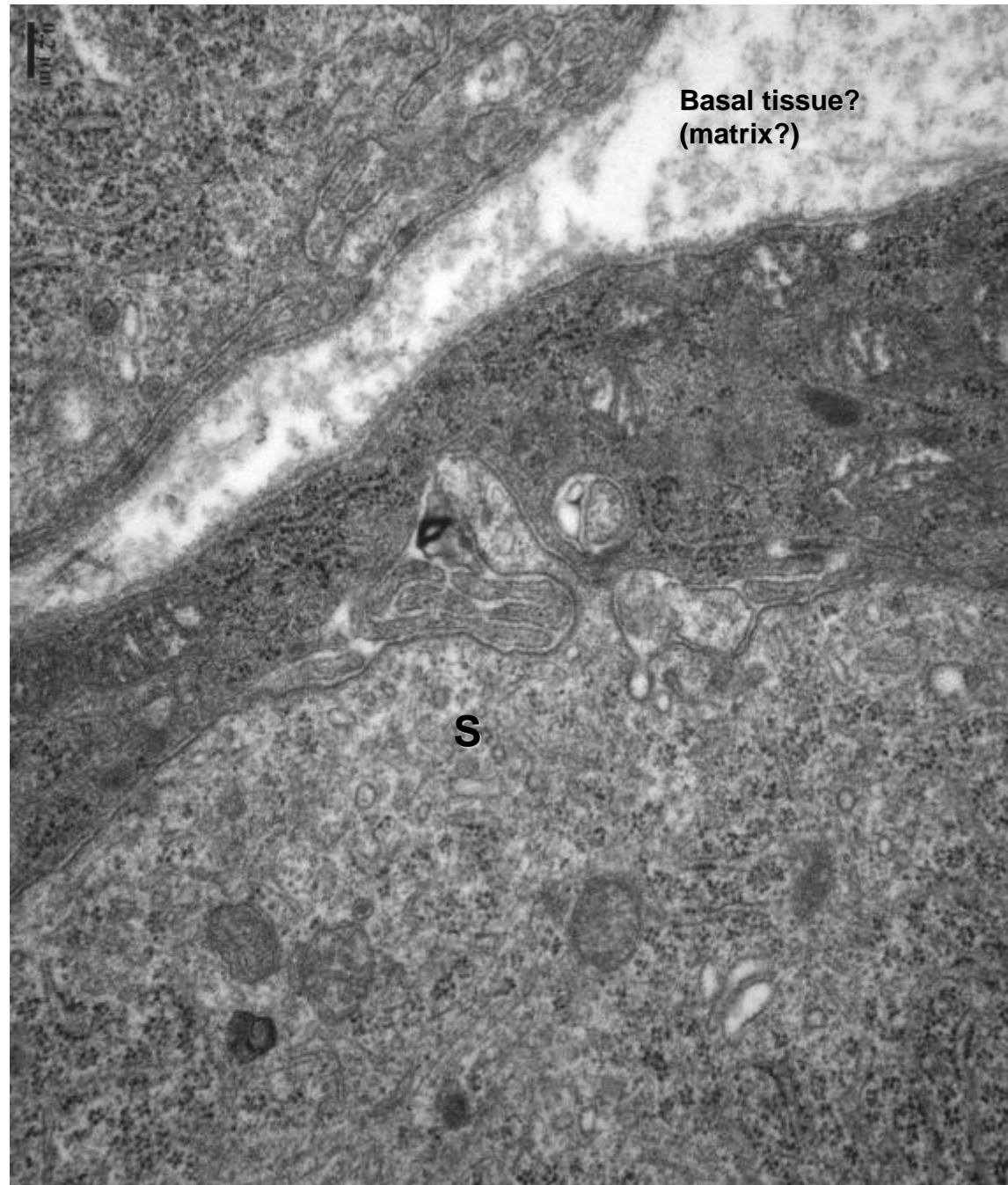
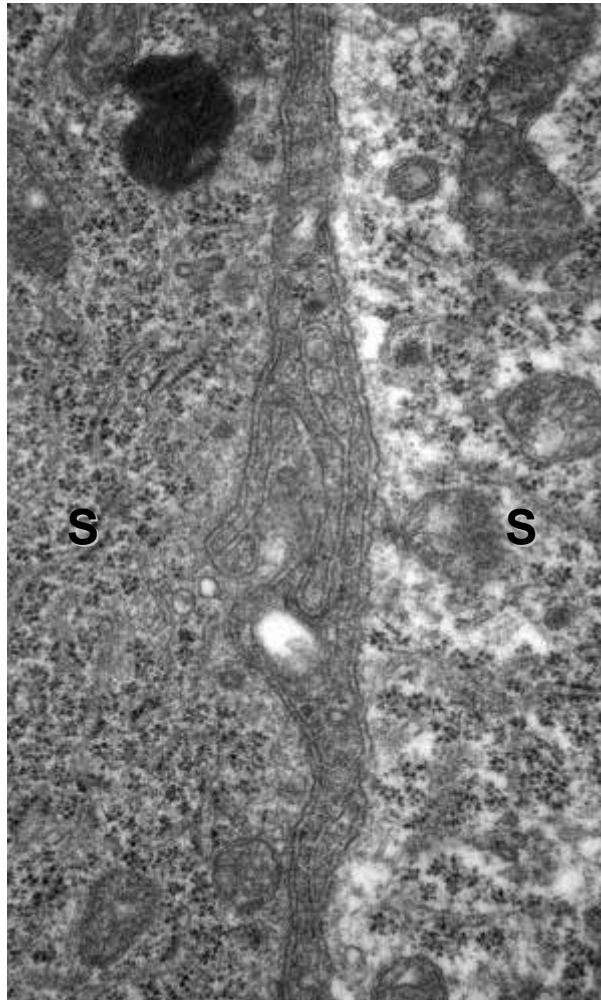
1. TG soma spine-like process가 SGCs (Vmes soma spine); SGCs TG soma
2. 가 cisternae 가 TG soma (NMJ).



Naïve TG and satellite glial cells (SGCs):

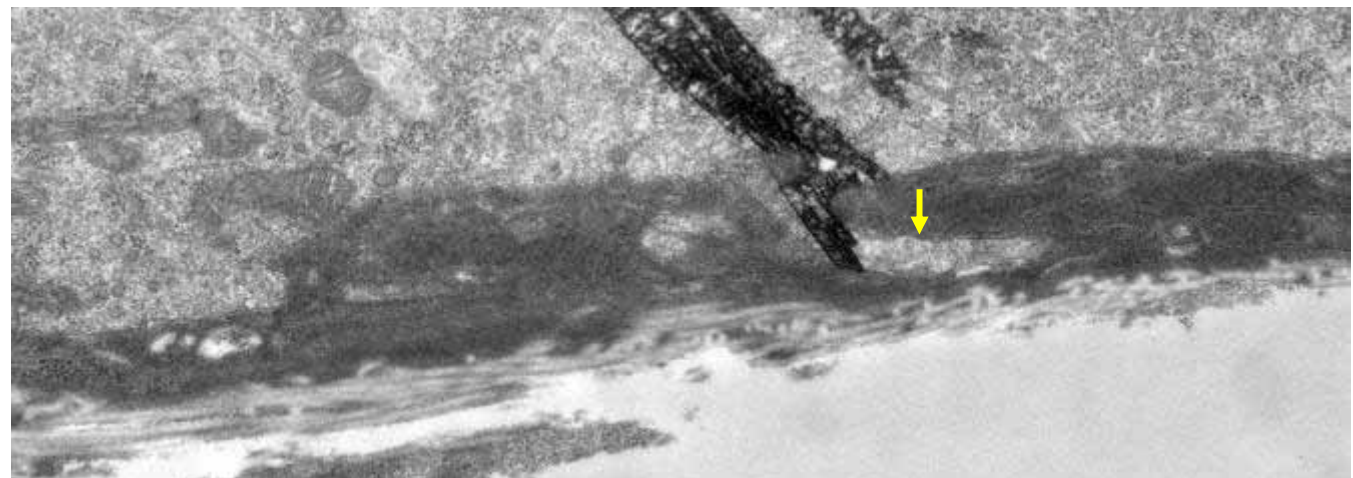
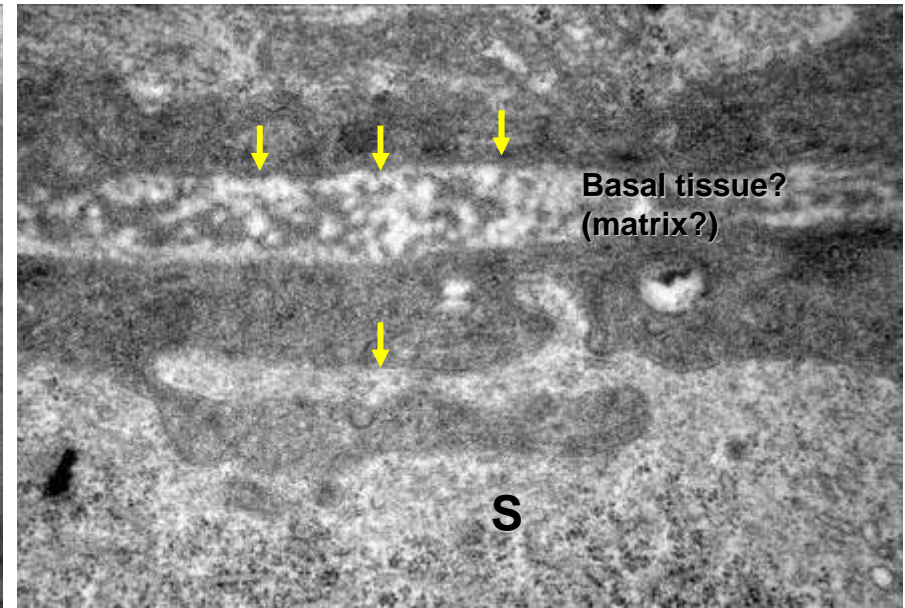
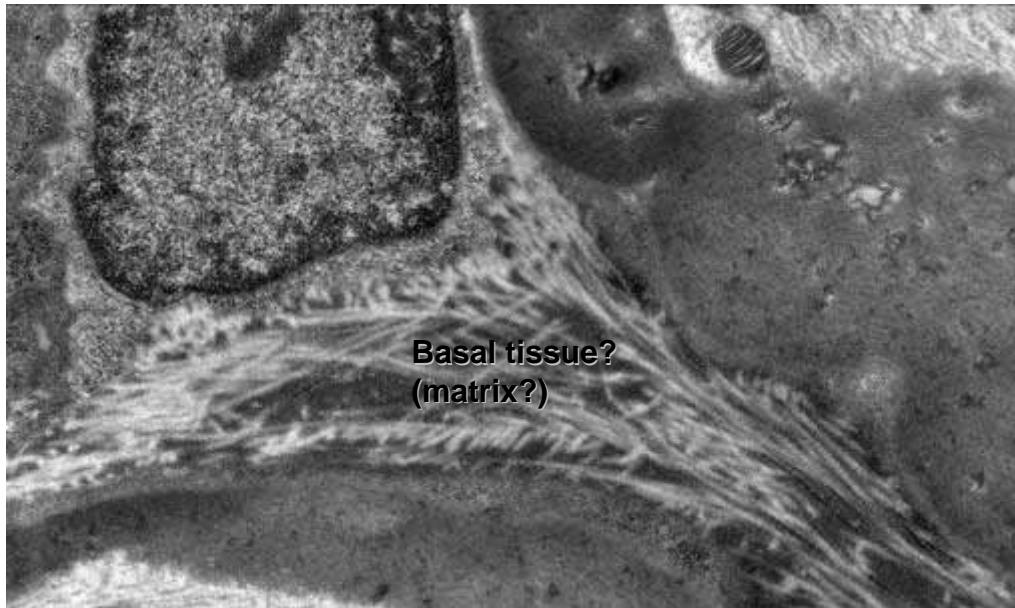
1. Matrix

가
.



TG and (SGCs) after IAN nerve transection:

1. SGCs volume
2. , SGCs cisternae structure가 가
3. matrix structure tubular structure가 (degenerated?).
4. TG soma spine SGCs , naïve



TG and (SGCs) after IAN nerve transection:

1. TG axons SGCs가 , naïve TG axon .

